

DRAWING NUMBER
51/171

DRAWING NUMBER

DRAWING NUMBER

DRAWING NUMBER

THIS INSTRUMENT WAS PREPARED BY MR. R. VAN CAMPEN, S.L.S., IN THE OFFICES OF BENCH MARK SURVEYING AND MAPPING, INC., 2833 EXCHANGE COURT, WEST PALM BEACH, FLORIDA 33409, TELEPHONE: (305) 569-2111

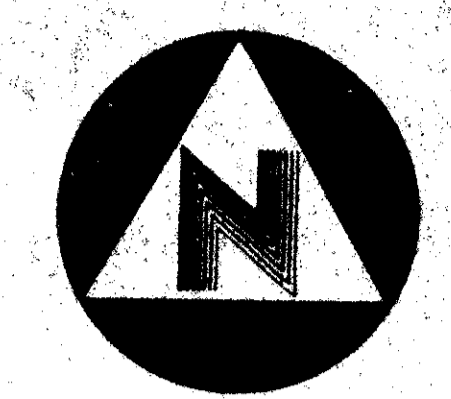
171

STATE OF FLORIDA
COUNTY OF PALM BEACH, FLORIDA
THIS PLAT WAS FILED FOR RECORD AT _____ THIS DAY OF _____, A.D., AND DULY RECORDED IN PLAT BOOK _____ AND _____ ON PAGES _____ AND _____
JOHN B. DUNKLE
CLERK, CIRCUIT COURT
BY _____ DC

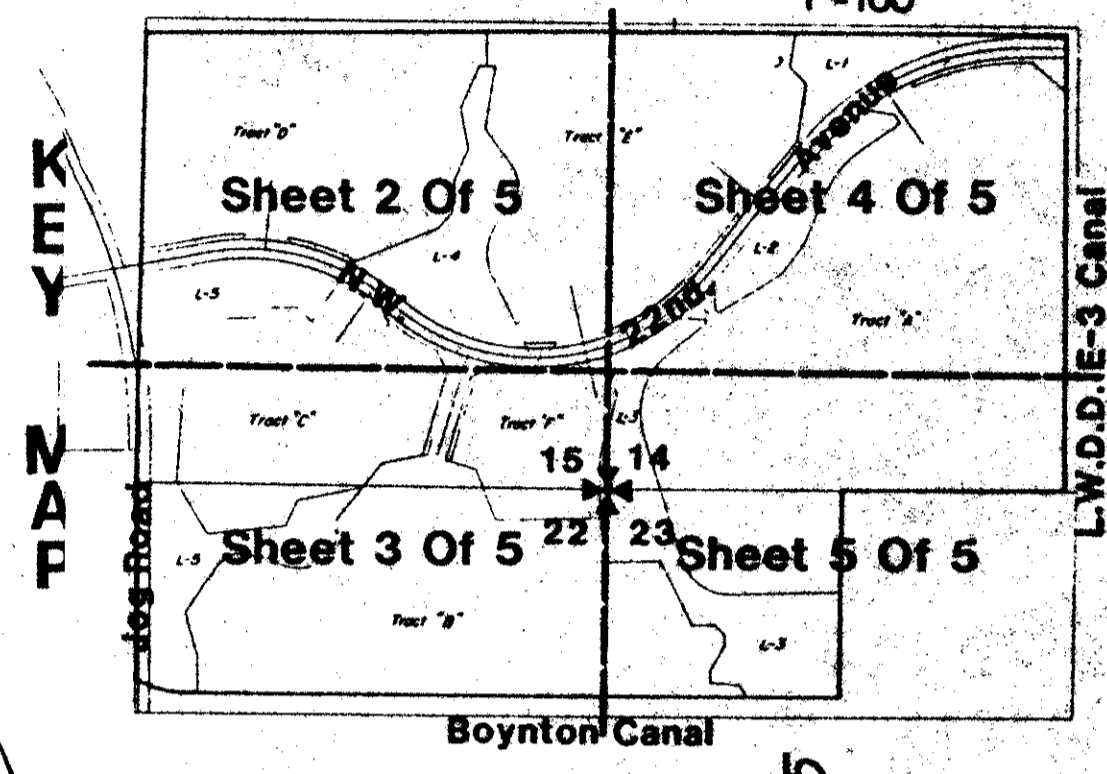
L.W.D.D. N.88°18'13"W 1000.00'
N.89°09'32"W 2680.02'
L-21 CANAL 721.20'

AREA TABULATION

AREA	ACRES
JOG ROAD	3.360
TRACT A	15.142
TRACT B	109.907
TRACT C	68.635
TRACT D	51.093
TRACT E	56.232
TRACT F (SCHOOL)	15.000
TRACT G	3.445
TRACT H	70.578
TOTAL	428.169



0' 100' 200'
GRAPHIC SCALE
1"=100'



TRACT "D"

TO BE REPLATTED PRIOR TO DEVELOPMENT
51.093 ACRES
45.0 AC. = HOUSING UNITS
6.093 AC. = OPEN SPACE

TO BE REPLATTED PRIOR TO DEVELOPMENT
TRACT "E"
56.232 ACRES
49.5 AC. = HOUSING UNITS
6.732 AC. = OPEN SPACE

FOR MATCH SEE SHEET 4 OF 5

PLANNED UNIT DEVELOPMENT TABULATIONS

TOTAL AREA THIS PLAT	428.169 ACRES
LESS ROAD RIGHTS OF WAY	16.802 ACRES
EQUALS EFFECTIVE BASE RESIDENTIAL AREA	409.667 ACRES
APPLICABLE DENSITY FACTOR	N.A.
TOTAL UNITS PERMITTED	N.A.
TOTAL UNITS THIS PLAT	1,037 UNITS
OPEN SPACE THIS PLAT	307 ACRES
DENSITY	3.1 UNITS PER ACRE

TARTAN LAKES PLAT NO. 3 - P.U.D.
A PART OF TARTAN LAKES - P.U.D.
LYING IN SECTIONS 14, 15, 22 AND 23, TOWNSHIP 46 SOUTH, RANGE 46 EAST
BEING A REPLAT OF A PORTION OF BOYNTON GARDENS, ACCORDING TO PLAT BOOK 6, AT PAGE 36, OF THE PUBLIC RECORDS OF
COUNTY OF PALM BEACH, STATE OF FLORIDA
APRIL, 1983
SHEET 2 OF 5

PALM BEACH FARMS CO. PLAT NO. 3 (PB. 2, PP. 45-54)

JOG ROAD

LE CHALET (PB. 31, PP. 166, 167)

TRACT L-5
WATER MANAGEMENT TRACT AND DRAINAGE EASEMENT TO BE MAINTAINED BY RAINBOW LAKES COMMUNITY MASTER ASSOCIATION, INC. WITHOUT RECOURSE TO PALM BEACH COUNTY

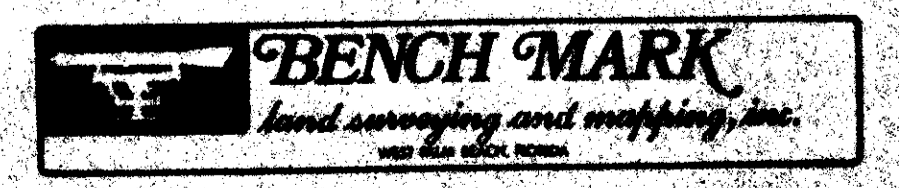
TRACT "C"
TO BE REPLATTED PRIOR TO DEVELOPMENT
34.777 ACRES
29.2 AC. = HOUSING UNITS
5.577 AC. = OPEN SPACE

FOR MATCH SEE SHEET 3 OF 5

51/171
TRACT "F"
(SCHOOL SITE)
15.00 ACRES

0316.003

CONRAD W. SCHAEFER CONSULTING ENGINEERS, INC.
PALM BEACH COUNTY, FLORIDA



DESIGNED DC	DRAWN YAL	CHECKED NYC	DATE 12-26-84	SCALE 1"=100'	APPROVED CWS	PROJECT NO. P2505	SHEET NO. 2
----------------	--------------	----------------	------------------	------------------	-----------------	----------------------	----------------